

# Wholesome Shelter



Bill Finn, CARE UK

Promoting holistic well-being by integrating Shelter with WASH and MHPSS



Our shelter vision:  
**Safe, Durable, Dignified, Healthy**







## Towards Healthier Homes in Humanitarian Settings

Proceedings of the Multi-sectoral Shelter & Health Learning Day 14th May 2020

Compiled by: Sue Webb, Emma Weinstein Sheffield and Bill Flinn



## MINDFUL SHELTERING



Recognising and Enhancing the Impact of Humanitarian Shelter and Settlements on Mental Health and Psychosocial Well-Being

Proceedings of the Shelter and Mental Health Learning Event, May 2021



B.1 / A HEALTHIER HOME IS A BETTER HOME

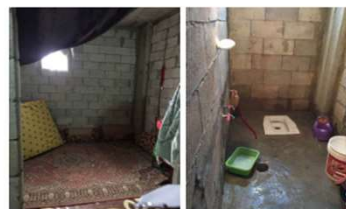
OPINION PIECES

### A HEALTHIER HOME IS A BETTER HOME

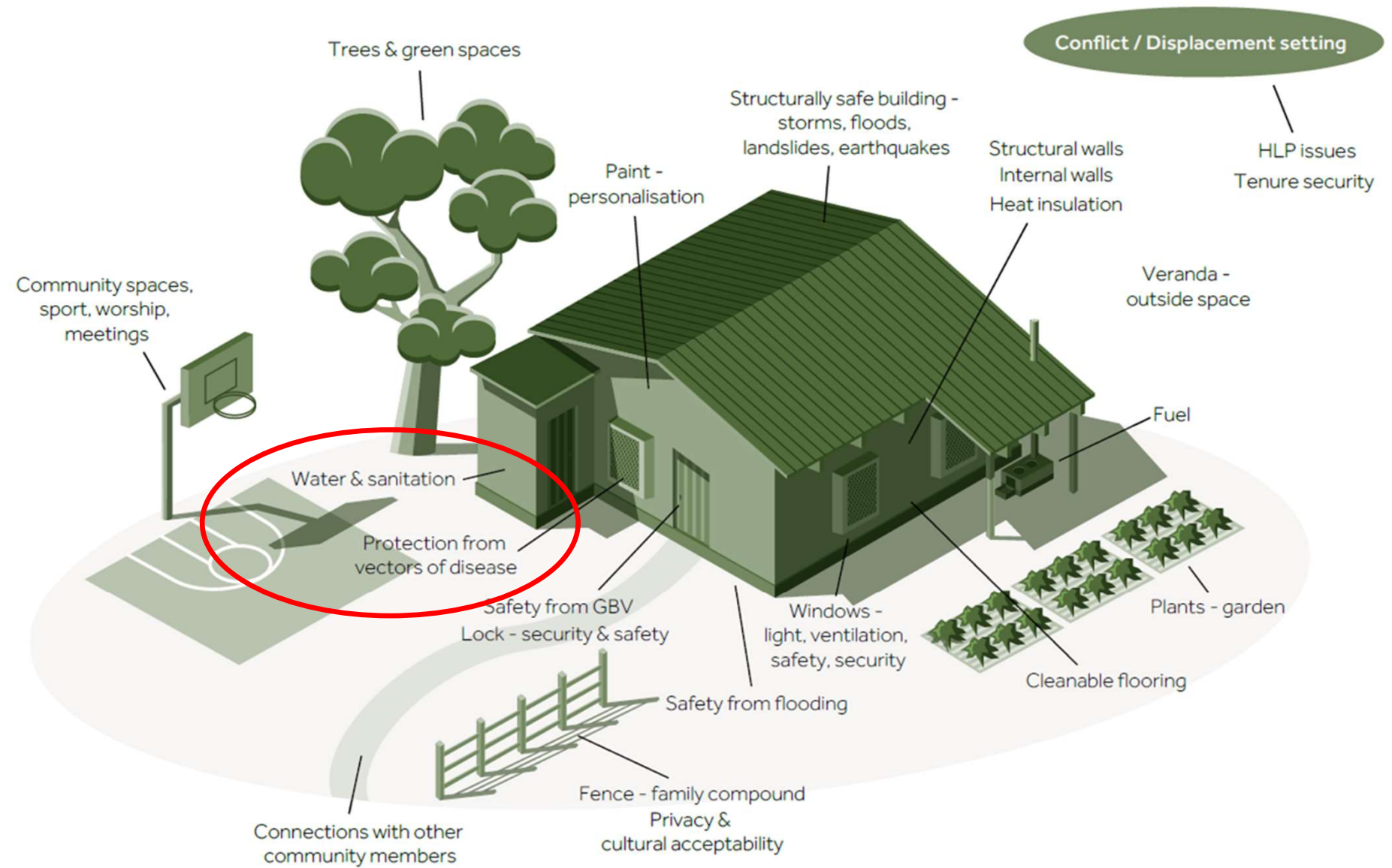
By Emma Weinstein Sheffield and Susannah Webb



In South Sudan, this project supported the construction of fuel-efficient stoves, which reduced health and protection risks. For more information see [Shelter Projects 2017-18 \(A7\) p.30](#).



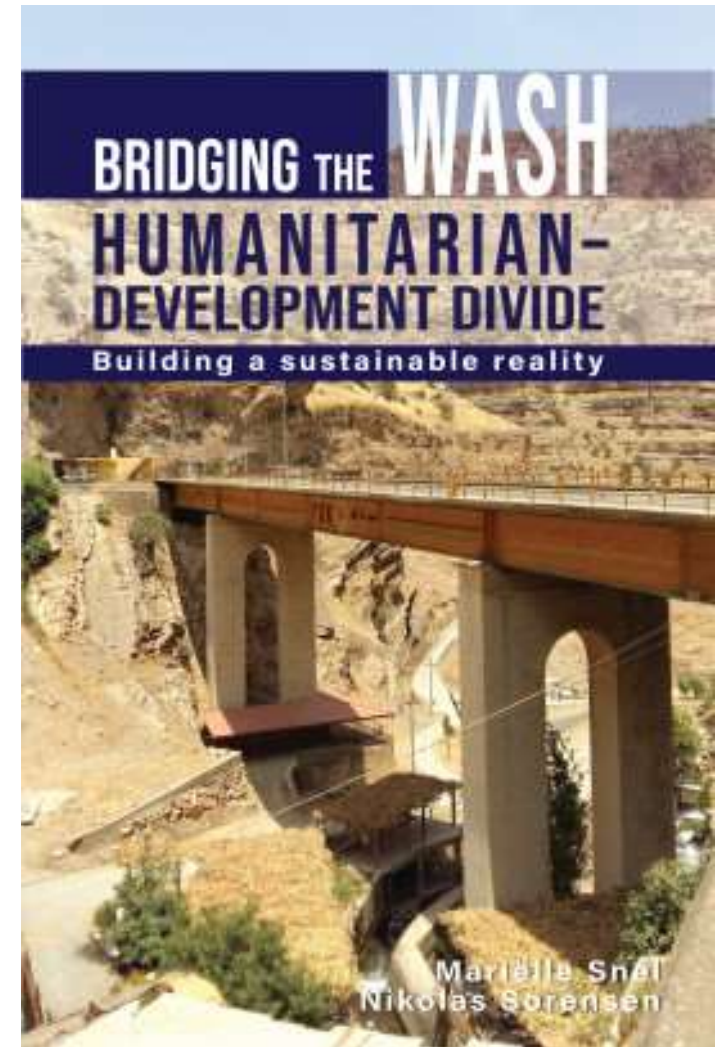
In Lebanon, this project undertook housing rehabilitations with the aim of reducing protection risks and improving health outcomes. For more information see [A.21 p.114](#).



# What is 'integrated programming'?

[Snel and Sorensen \(2021\)](#) define integrated WASH as programming that

“focuses on the nexus between WASH and nutrition, education, livelihoods, child protection, agriculture and food security”



## WASH Roadmap Workstream 3.4

### Multi-sectoral integration and coordination of WASH:

“With this initiative, The WASH Humanitarian sector aims to *position’ itself within other sectors* to maximize more significant results and ***break down sectoral silos*** by exploring venues for effective integrated responses in the future.”





In its **first phase**, the initiative aims to identify the existing gaps and challenges in effective coordination for multi-sectoral collaboration



In the **second phase**, based on building on the data gathered, decision-making tools and guidance for emergency preparedness and response are reviewed and compiled.



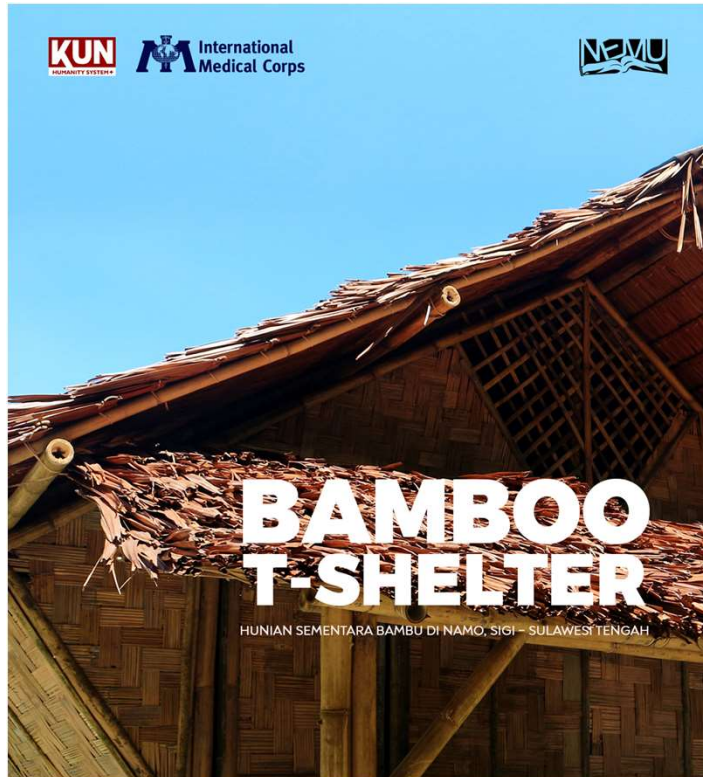
In the **third phase**, packaging the integrated and documented guidance tools and SoPs for intersectoral guidance for ensuring a well-coordinated approach to future multi-sectoral emergency responses.



In the **fourth phase** of the initiative plan, a list of pathways are rolled out across multi-sectoral platforms, such as guidance tools for local authorities and the communities concerned. Inter-sectoral integration is piloted.



In the **final phase** of the plan, based on effective coordination for multi-sectoral collaboration, evidence-based practices would be outlined to support this intersectoral integration – entailing to increased advocacy and securing funding.



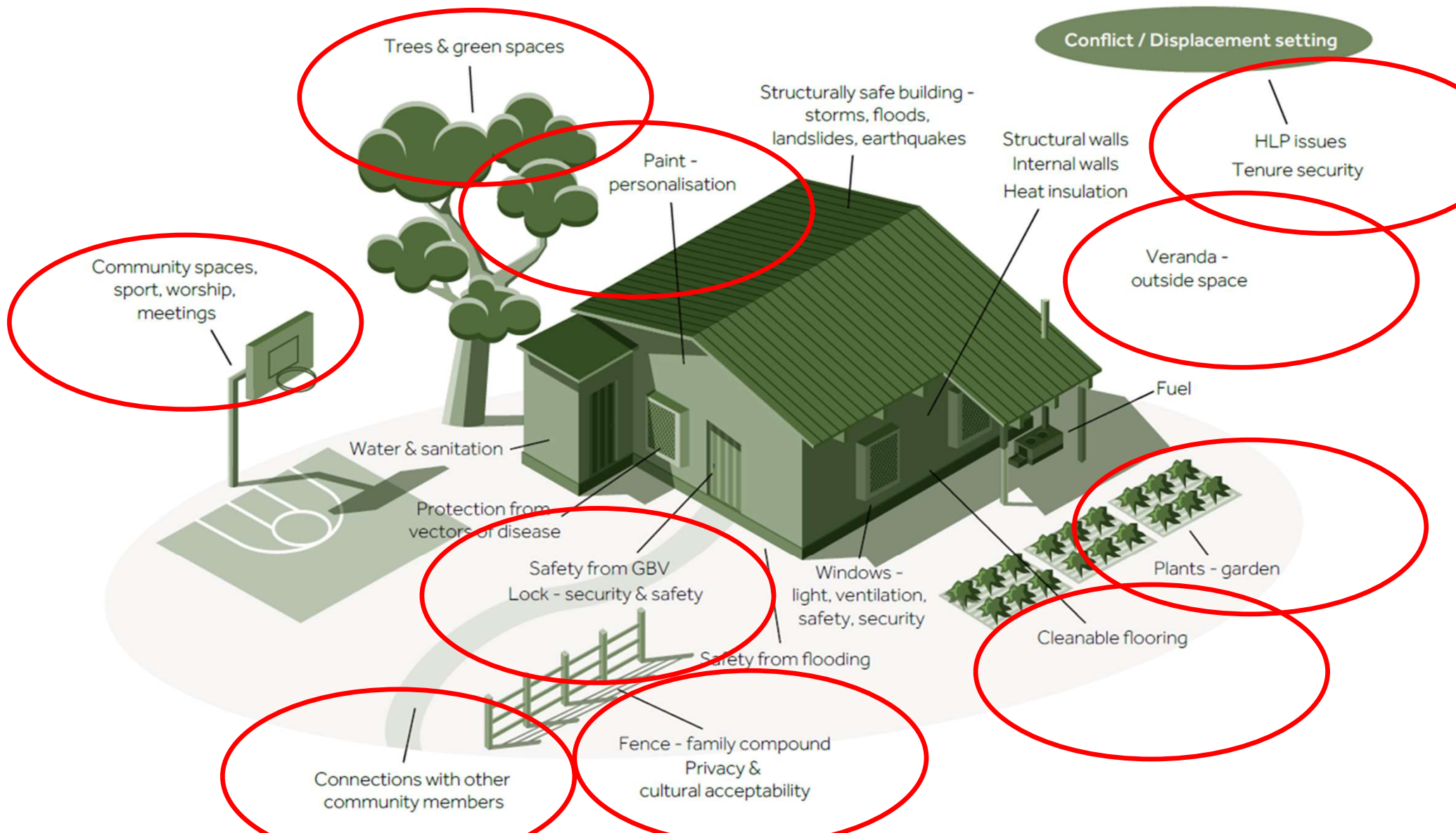


# Poo, Pee, Periods and Privacy

**What needs to happen next** to promote integrated Shelter/WASH with the objective of facilitating healthier homes and holistic well-being?



- What would it take to achieve 'one house, one toilet' in humanitarian settings?
- What are the priority aspects of healthier homes in different contexts?
- What would a minimum integrated 'Shelter/WASH package' look like in different phases of response and in different contexts?
- What information and further research is needed?



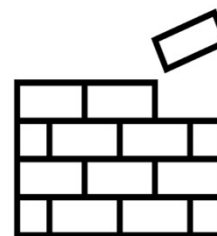
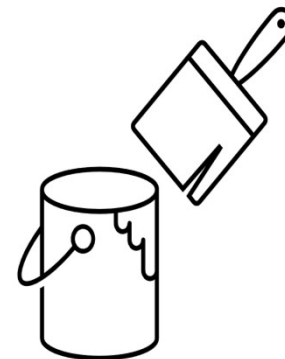


# MINDFUL SHELTERING



Recognising and Enhancing the Impact of Humanitarian Shelter and Settlements on Mental Health and Psychosocial Well-Being

Proceedings of the Shelter and Mental Health Learning Event, May 2021





On 17 May 2022 the **IASC Reference Group for MHPSS in Emergencies** hosted the online session *Mental Health and Psychosocial Support (MHPSS): Bringing wellbeing to the communities through multi-sectoral integration* at the HNPW.

**Key materials and resources** were shared at the session to support actors from all sectors to integrate MHPSS in their actions.

In addition, three experiences from country level integration were shared by colleagues in Bangladesh, Mozambique and Venezuela. The resources are shared in this document, which can be used as a tool for MHPSS integration across sectors.

[The Inter-Agency Minimum Standards for GBV in Emergencies Programming \(Standard 5 Psychosocial Support\)](#)

[Women Rise: A Gender-Based Violence Toolkit](#)

[Feminist Approaches to Specialized Mental Health Care for Survivors of Gender-based Violence](#)

[Health Cluster Guide](#)

[Ethics. Key questions to ask when facing dilemmas during COVID-19 response in humanitarian settings](#)

[The Sphere Handbook. Health Standards](#)

[CP-EIE Collaboration in Coordination Framework](#)

[Which includes an MHPSS Thematic Paper](#)

[Mindful sheltering report](#)

[Global Shelter Cluster meeting 2021. Shelter and health session](#)

[Healthier Homes article](#)

Child Protection

"In Protection Cluster"

[MHPSS Inter-Sector Guide for Child Protection Coordination](#)

[Victime assistance in Mine Action, highlighting MHPSS as one of the key actions](#)

**IASC**

Inter-Agency Standing Committee

1999. Reference Group for Mental Health and Psychosocial Support in Emergency Settings

**MHPSS**

**MHPSS MSP**

In addition to the several resources for integration available in the IASC MHPSS RG website, the [MHPSS Minimum Service Package](#) was highlighted



Mental Health and  
Psychosocial Support

## MINIMUM SERVICE PACKAGE



PDF version for pilot testing  
September 2021

An online version of the current MSP pilot version and supplementary materials are available at [mhpsmsp.org](http://mhpsmsp.org).  
Access to some online content requires registration and log-in.

**IASC** Inter-Agency  
Standing Committee

## Guidance

# MENTAL HEALTH AND PSYCHOSOCIAL SUPPORT IN EMERGENCY SETTINGS

## Monitoring and Evaluation with Means of Verification: Version 2.0

IASC Reference Group on Mental Health and  
Psychosocial Support in Emergency Settings

September 2021

Endorsed by the IASC Operational Policy and Advisory Group  
(OPAG)





## **MHPSS and protection outcomes**

Why joint action to improve mental health and psychosocial wellbeing of people affected by conflict, violence and disasters should be a priority for all protection actors

*Sarah Harrison, Fahmy Hanna, Peter Ventevogel,  
Nancy Polutan-Teulleres, William S. Chemaly*

**Policy Discussion Paper – September 2020**

# What next?



Shelter and Health Learning Event #3

September 2022

CARE International UK [Webb@careinternational.org](mailto:Webb@careinternational.org)  
CENDEP, Oxford Brookes University [s.webb@brookes.ac.uk](mailto:s.webb@brookes.ac.uk)



Webb, S., Weinstein Sheffield, E. and Flinn, B. (2020) [\*Towards Healthier Homes in Humanitarian Settings\*](#). Oxford. CARE International UK and CENDEP

Webb, S. and Weinstein Sheffield, E. (2021) [\*Mindful Sheltering\*](#). Oxford. CARE International UK and CENDEP

InterAction (2021) [\*Roadmap for Research\*](#) InterAction.  
Chapter 8 Adopting an Environmental Health Lens in Practice (Co-authored with various others.)

Weinstein Sheffield, E. and Webb, S. (2021) [\*'A Healthier Home is a Better Home'\*](#), *Shelter Projects 8th edition*, Global Shelter Cluster  
<http://shelterprojects.org/editions.html#8thedition>